

BURBERRY

Personal Shopper: Winter Dresses

Now that you've stored away your floaty summer frocks, it's the perfect excuse to go shopping for a new winter dress. Looking for an office-appropriate option? A long-sleeved sweater dress in a cozy knit will do the trick. If you're seeking something more festive for a holiday party, try a truly opulent lacy number instead. Whatever you're looking for, we've got you covered, so read on for our picks today.

[COMMENTS \(4\)](#)[SHARE ▶](#)

LONG-SLEEVE SHIFT



6 of 11
AUTOPLAY



PREV

NEXT

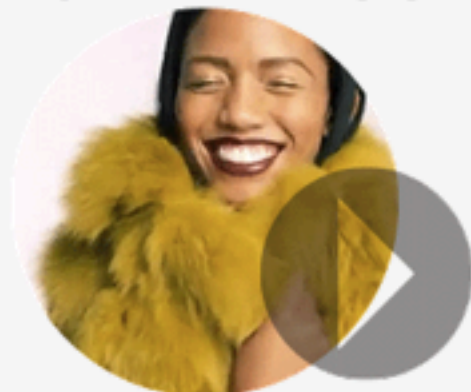
Long-Sleeve Shift

1. Raoul [Paneled Eclectic Dress](#) (\$480)
2. MAXFOWLES [Round-Neck Dress with Leather Pockets](#) (\$990)
3. J.Crew [Maritime Dress](#) (\$98) in Heathered Stripe
4. A.P.C. [Silk Twill Retro Dress](#) (\$400)

Like 1

Tweet 0

TOP VIDEOS



WE'VE CULLED THE HOTTEST FALL RUNWAY TRENDS FOR YOU—CHECK IT OUT!

FALL TREND GUIDE

